



Holford House , London, SE16 3NP

£395,000 Leasehold



Nestled in the vibrant heart of Bermondsey, is this three-bedroom split-level maisonette offers a delightful blend of comfort and convenience. Built in 1960's, the property boasts a well-designed layout that maximises space and natural light.

Upon entering, you are welcomed into a spacious reception hallway. This property features three generously sized bedrooms, providing ample space for family living or investment.

One of the standout features of this property is the private balcony, an ideal spot to enjoy your morning coffee or unwind after a long day,

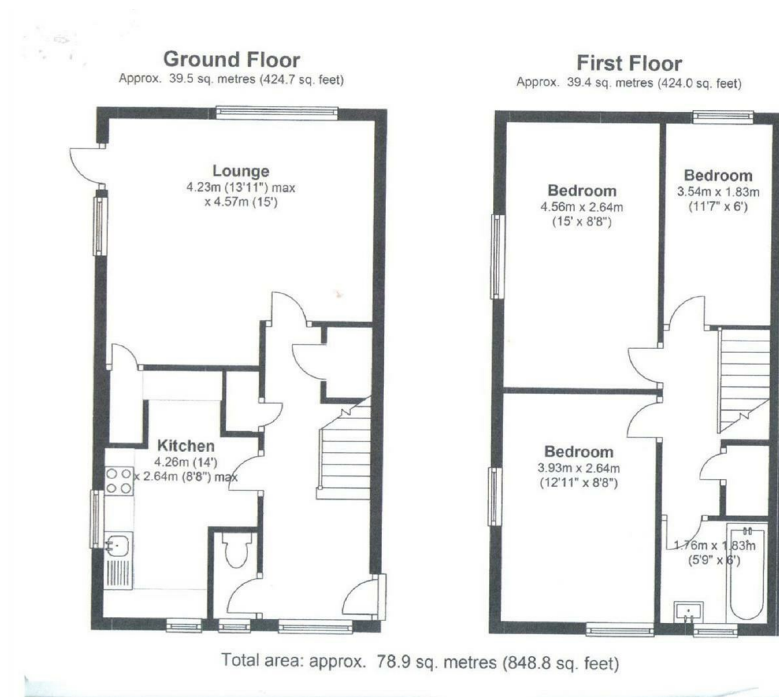
Situated just moments away from a variety of shopping facilities, you will find everything you need within easy reach, from local boutiques to larger retail outlets. The property is also offered with no onward chain, making it an attractive option for those looking to move swiftly into their new home.

This maisonette presents a wonderful opportunity for anyone seeking to make a property a home,

- THREE BEDROOM
- CLOAKROOM
- PRIVATE BALCONY
- CLOSE TO AMENTIES
- NO ONWARD CHAIN

Viewing

Please contact our Oppida Estates Ltd Office on 0207 232 2222 if you wish to arrange a viewing appointment for this property or require further information.



Energy Efficiency Rating		Current	Potential
Very energy efficient - lower running costs			
(92 plus)	A		
(81-91)	B		
(69-80)	C		
(55-68)	D		
(39-54)	E		
(21-38)	F		
(1-20)	G		
Not energy efficient - higher running costs			
		70	71
England & Wales		EU Directive 2002/91/EC	



These particulars, whilst believed to be accurate are set out as a general outline only for guidance and do not constitute any part of an offer or contract. Intending purchasers should not rely on them as statements of representation of fact, but must satisfy themselves by inspection or otherwise as to their accuracy. No person in this firm's employment has the authority to make or give any representation or warranty in respect of the property.